

WORLD-CLASS

Key Figures in Rhône-Alpes

600 companies in life sciences, **70,000** employees, **100** biotech companies, **10** life sciences companies created per year

More than **€ 1 billion** investment in vaccines and diagnostics between 2004 and 2010 (Sanofi Pasteur, Meriel, bioMérieux, Genzyme, Mylan, Merck Serono...)

2,500 researchers in infectious diseases, half private and half public

4,000 researchers in micro and nanotechnology in Grenoble of which 300 specialized in health applications (CEA Leti...)

20,000 students in life sciences

7 International and European R&D infrastructures: P4 Jean Mérieux Inserm laboratory, ESRF, EMBL, ILL, 1GHz NMR, WHO

350 clinical trials, 31,790 hospital beds

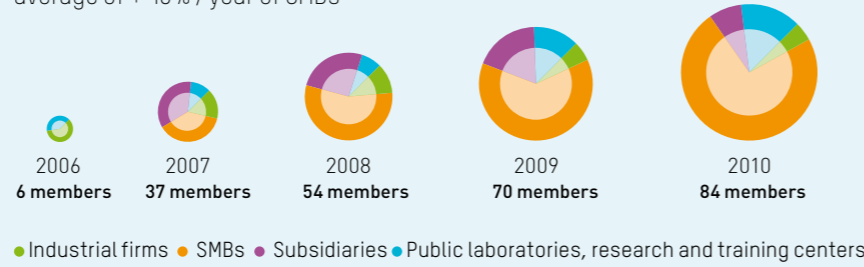
Sources: Grand Lyon, AEPI, Agence régionale de la Santé

4 world-class leaders as founders

Sanofi Pasteur (human vaccines), **Meriel** (animal health), **bioMérieux** (*in vitro* diagnostics) and **BD** (drug delivery system)

Members in the field of infectious & immune diseases

average of +40% / year of SMBs



Located in the Rhône-Alpes region, France's #2 region in terms of research potential and entrepreneurial spirit

A leading European player

- 7th European Union region in terms of GDP: over € 180 billion in 2009¹
- 4th place in Europe in the number of researchers²
- 5% of European biotechnology potential research³

Sources: ¹Insee www.rhonealpes.fr; ²AEPI 2011; ³Press Release UbiFrance 2009

R&D



Project leader's categories of 87 funded R&D projects

- Industrials: **11 projects**
- Intermediate companies: **3 projects**
- SMBs: **31 projects**
- Public Laboratories: **42 projects**

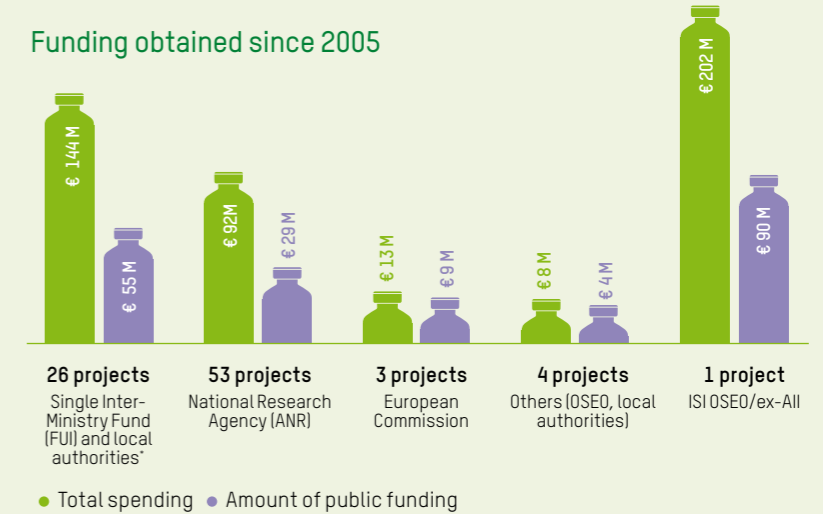
Since 2005, 1,000 jobs in Rhône-Alpes due to the development of 87 R&D projects supported by Lyonbiopole

A global center of excellence in vaccines and diagnostics, boosting innovation to strengthen companies' competitiveness and to increase Rhône-Alpes region's attractiveness

1 sepsis program coordinated by Lyonbiopole and launched in April 2010

Since 2005, Lyonbiopole has accredited **87** multi-partner R&D projects for a total R&D investment of **€459 million** of which **€187 million** have been obtained from State, local authorities*, European Commission and OSEO

Funding obtained since 2005



* European Regional Development Fund (EDFR), The Rhône-Alpes Region, Greater Lyon, Grenoble Alpes Metropole, the County Councils of Rhône, Isère and Ain and Grenoble City

HEALTH CHALLENGES

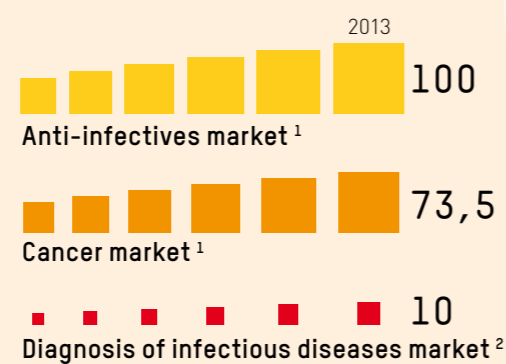
7.6 million deaths caused by cancer per year

14 million deaths per year caused by infectious diseases, 90% occur in LEDs

Sources: WHO

MARKETS

Market turnover (bn \$)



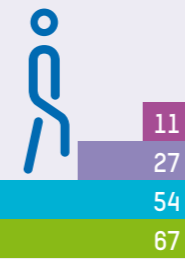
Sources: ¹Business Insight 2009; ²Kalorama 2009

BUSINESS DEVELOPMENT

23 members of the BIO BIZ DEV Club, gathering business developers. More than **1,200** professionals met in 2010 during events organized by Lyonbiopole. More than **€ 50 M** raised in funding rounds by biotech SMBs in Rhône-Alpes. **50** companies supported by Lyonbiopole on **8** international missions.

15 European and International partners

- Sweden
- Germany
- Netherlands
- Luxembourg
- United Kingdom
- Canada (Quebec)
- United States: Massachusetts (Boston), California (San Francisco and San Diego) and Maryland (Baltimore)



International Technological Partnership Program

- signed agreements
- companies follow-up
- companies diagnostics
- companies training

- China (Shanghai)
- Japan (Kansai / Kobe)
- Israel

FACILITIES

CENTRE D'INFECTIOLOGIE
by Lyonbiopôle

l'Europe s'engage
en Rhône-Alpes

21,000 sq.ft / 1,920 sq.m of laboratories, BSL2 / BSL3,

6 R&D teams are hosted: Inserm U851, Inserm U851/Finovi, IMAccess, PLATINE project (Innate-Pharma, Transgene, ImmunID, Inserm and Centre Léon Bérard), PX Therapeutics and Transgene

LYONBIPOLE
BUSINESS CENTER

4,305.5 sq.ft / 400 sq.m of offices

acCInov

64,583 sq.ft / 6,000 sq.m of innovation platforms that will provide biological analysis and bioproduction services, run by new or emerging SMBs. A real estate program in the heart of the Charles Mérieux campus in Lyon Gerland, next to Infectious Diseases Center of Lyonbiopole. Scheduled to open mid-2013

In the field of infectious diseases, cancers and immune related diseases

YOUR STRATEGIC PARTNER IN FRANCE TO:

- 1 DEVELOP** your network and identify strategic partners,
- 2 INNOVATE** and set-up R&D projects,
- 3 GAIN ACCESS** to public and private funds,
- 4 SETTLE** your activity in fully equipped platform of excellence (BSL2 / BSL3 labs, bioproduction, bioanalyses...)

Lyonbiopole, a world-class cluster managed by a team of **14** people at your disposal

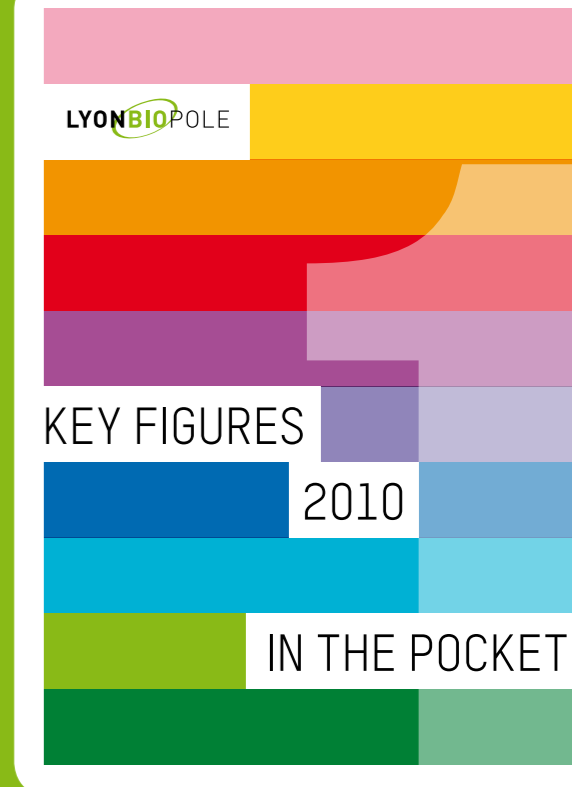


Visit our website: www.lyonbiopole.com

In the field of infectious diseases, cancers and immune related diseases

YOUR STRATEGIC PARTNER IN FRANCE TO:

- 1 **DEVELOP** your network and identify strategic partners,
- 2 **INNOVATE** and set-up R&D projects,
- 3 **GAIN ACCESS** to public and private funds,
- 4 **SETTLE** your activity in fully equipped platform of excellence (BSL2 / BSL3 labs, bioproduction, bioanalyses...)



Lyonbiopole, a world-class cluster managed by a team of **14** people at your disposal

321 avenue Jean Jaurès
Bâtiment Domilyon
F - 69007 Lyon

Phone + 33 (0)4 72 76 53 30
Fax +33 (0)4 72 70 48 29
info@lyonbiopole.com

www.lyonbiopole.com

LYONBIOPOLE



Visit our website: www.lyonbiopole.com